

RUBBERHOG®

Rubber Surgery Tools





Rubberhog® - *Rubber Surgery Tools* are utilized worldwide for producing the highest quality rubber repairs. Laboratory testing and repair technicians' experience have proven that the buffed textures produced by Rubberhog tools generate the greatest bond strength when repairing or joining rubber. With Rubberhog you can feel confident you've selected what others have trusted for over 30 years.

Rubberhog features innovative technology from the leaders in the industry.

- Constructed using aircraft-quality nickel brazing materials.
- Best-in-industry coating processes and consistency
- A unique range of tool shapes means the optimum choice for every application.

Rubberhog provides you with higher performance for a faster, easier and better job every time.

- A longer service life resulting in less frequent tools replacement.
- The optimum buffed texture yields maximum repair and rubber adhesion.
- Less heat to ensure a lower risk of scorch.
- The fastest material removal for shorter repair times and less operator fatigue.



If the box doesn't say Rubberhog, you're not receiving the benefits of Rubberhog.

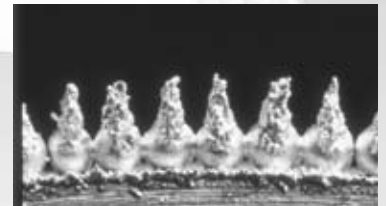
RUBBERHOG®

Rubberhog® tools provide superior performance due their specialized carbide coatings. The sharp points of carbide and open-tooth structure allow for remarkable efficiency. Rubberhog's unique design and many years of manufacturing experience combine to offer two distinct lines to serve your needs - Original and Extreme.



Pages 2-5

The Rubberhog Original tool line has long been the leader for a very wide range of repair and bonding applications, and includes all of the most popular Rubberhog tools. The Original line features the proven 'SSG' coating, which provides cool buffing and ideal rubber texture for a strong bond every time. With many different shapes and sizes available, this is known to be the most versatile product line.

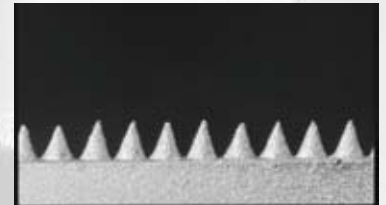


Magnified view of SSG



Pages 6-7

Rubberhog Extreme tools feature the very free-cutting, uniformly-spaced 'MCM' coating. Due to their aggressiveness, they are best used for patch removal or where heavy grinding is required, such as in off-road tire or conveyor belt repair. Rubberhog Extreme tools are available in a more select range of tool sizes and shapes.



Magnified view of MCM

Rubberhog Reference Size Chart

SSG SIZE (Original)	MCM SIZE (Extreme)	STANDARD GRIT REFERENCE*	DESCRIPTION	APPLICATION
SSG 170		60	Very Fine	For patch installation and cosmetics
SSG 230		36	Fine	Slightly more aggressive; for soft gum patch installation and cosmetics
SSG 330		24	Medium	Exterior repair finishing or removing rasping low spots
SSG 390	MCM 70	16	Coarse	Rubber removal or sidewall texturing for mold cure retread and OTR inner liner removal
SSG 460	MCM 90	14	Very Coarse	Very aggressive; heavy rubber removal and shaping
SSG 550	MCM 120	12	Extremely Coarse	Most aggressive; very heavy rubber removal

*Note: Rubberhog coatings perform much better than standard grit in most applications. Grit reference is only for comparison.

FLARED CONTOUR WHEELS

The wheels listed below are most often used for buffing the inner liner of tires in preparation for bonding of patches. The wheel shapes have been carefully designed to enable the technician to keep a large area of the wheel in contact with the tire, thus obtaining a very evenly buffed surface without dips or gouges. The contour wheels in the coarser coating sizes are often used for cleaning up section repairs, or for patching OTR tires. **Recommended Max 5,000 RPM.**

Part No.	Diameter	Width	Bore	Coating
100	1-3/4" (44.4mm)	3/4" (19mm)	3/8" (9.5mm)	170
102	1-3/4" (44.4mm)	3/4" (19mm)	3/8" (9.5mm)	230
104	1-3/4" (44.4mm)	3/4" (19mm)	3/8" (9.5mm)	390
1-504	2" (50.8mm)	1" (25.4mm)	3/8" -24	170
1-502	2" (50.8mm)	1" (25.4mm)	3/8" -24	230
1-500	2" (50.8mm)	1" (25.4mm)	3/8" -24	390
130-170	2" (50.8mm)	3/4" (19mm)	3/8" (9.5mm)	170
130-230	2" (50.8mm)	3/4" (19mm)	3/8" (9.5mm)	230
130-390	2" (50.8mm)	3/4" (19mm)	3/8" (9.5mm)	390
107	2-1/2" (63.1mm)	1-1/16" (26.9mm)	3/8" (9.5mm)	170
109	2-1/2" (63.1mm)	1-1/16" (26.9mm)	3/8" (9.5mm)	230
111	2-1/2" (63.1mm)	1-1/16" (26.9mm)	3/8" (9.5mm)	390
112	3" (76.2mm)	1-1/4" (31.7mm)	3/8" (9.5mm)	170
114	3" (76.2mm)	1-1/4" (31.7mm)	3/8" (9.5mm)	230
116	3" (76.2mm)	1-1/4" (31.7mm)	3/8" (9.5mm)	390
118	3-1/2" (88.9mm)	1-1/2" (38.1mm)	3/8" (9.5mm) or 1/2" (12.7mm)	170
120	3-1/2" (88.9mm)	1-1/2" (38.1mm)	3/8" (9.5mm) or 1/2" (12.7mm)	230
122	3-1/2" (88.9mm)	1-1/2" (38.1mm)	3/8" (9.5mm) or 1/2" (12.7mm)	390
124	4" (101.6mm)	1-1/2" (38.1mm)	1/2" (9.5mm)	170
126	4" (101.6mm)	1-1/2" (38.1mm)	1/2" (9.5mm)	230
128	4" (101.6mm)	1-1/2" (38.1mm)	1/2" (9.5mm)	390
129*	4" (101.6mm)	1-1/2" (38.1mm)	3/4" (9.5mm)	390

*129 is a machined and predressed precision contour wheel for bandag sidewall buffers.

ECONOMY CONTOUR WHEELS

These contour wheels utilize proven Rubberhog shapes, but feature the Standard Grit coating for an economical solution for patch prep. They provide easier control for the inexperienced and are much safer than old-fashioned black "stones!"

Recommended Max 5,000 RPM.



Part No.	Diameter	Width	Bore	Coating
107-60	2-1/2" (63.1mm)	1-1/16" (26.9mm)	3/8" (9.5mm)	60 Grit
109-36	2-1/2" (63.1mm)	1-1/16" (26.9mm)	3/8" (9.5mm)	36 Grit
130	2" (50.8mm)	3/4" (19mm)	3/8" (9.5mm)	60 Grit

LOW-PROFILE PATCH PREP WHEELS

These special contour wheels are designed specifically for buffing closer to the sidewall in low profile tires without risk of sidewall damage. They have an internal thread so the mounting adaptor does not stick out of the small end, which is completely covered with the SSG coating. **Recommended Max 5,000 RPM.**

Part No.	Diameter	Width	Bore	Coating
140	1-1/4" (31.7mm)	3/4" (19mm)	3/8" -24	170
142	1-1/4" (31.7mm)	3/4" (19mm)	3/8" -24	230



SECTION REPAIR TOOLS: THREADED BALLS

For skiving and texturing of small exterior section repairs. Great for texturing hard to reach areas of deeper skives. **Recommended Max 5,000 RPM.**

Part No.	Diameter	Width	Bore	Coating
551	1-1/8" (28.5mm)	N/A	3/8" -24	230
553	1-1/8" (28.5mm)	N/A	3/8" -24	390

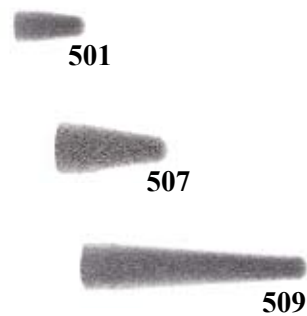


TAPERED CONES

For skiving and texturing of large exterior section repairs.

Recommended Max 5,000 RPM.

Part No.	Diameter	Length	Bore	Coating
501	5/8" (15.8mm)	1-3/8" (34.9mm)	3/8" -24	230
503	5/8" (15.8mm)	1-3/8" (34.9mm)	3/8" -24	390
505	7/8" (22.2mm)	2" (50.8mm)	3/8" -24	230
507	7/8" (22.2mm)	2" (50.8mm)	3/8" -24	390
509	7/8" (22.2mm)	4" (101.6mm)	3/8" -24	230
511	7/8" (22.2mm)	4" (101.6mm)	3/8" -24	390



1/4" SHAFT SPHERES & TAPERS

These tools are best suited for skiving and texturing of smaller exterior section repairs, or for small buzzout repairs. The spheres are for interior chamfering around punctures in retreading, and greatly reduce casing losses due to entrapped air in retreading. **Recommended Max 5,000 RPM.**

Part No.	Shape	Head Diameter	Head Length	Coating
601	SPHERE	5/8" (15.8mm)	5/8" (15.8mm)	330
603	SPHERE	7/8" (22.2mm)	7/8" (15.8mm)	330
611	TAPER	5/8" (15.8mm)	1" (25.4mm)	330
613	TAPER	7/8" (22.2mm)	1-1/4" (31.7mm)	330



Also available with 6mm shafts by special order.

1/8" SHAFT TOOL KIT

For extremely small defect repairs. Items sold in a 4-tool kit or individually.

Recommended Max 5,000 RPM.

Part No.	Shape	Head Diameter	Head Length	Coating
635	Kit contains one each of the following tools.			
638	ROTOR SAW	3/4" (19mm)	1/8" (3.1mm)	170
639	SPHERE	3/8" (9.5mm)	3/8" (9.5mm)	170
636	TAPER	1/8" (3.1mm)	7/8" (22.2mm)	170
637	TAPER	1/4" (6.3mm)	5/8" (15.8mm)	170



Also available with 3mm shafts by special order.



619

621

ROTOR SAWS

Designed for skiving and texturing of smaller exterior section repairs. They're also utilized for small buzzout repairs. **Recommended Max 5,000 RPM.**

Part No.	Head Diameter	Head Length	Coating
619	1-3/8" (34.9mm)	1/4" (6.3mm)	330
620	1-5/8" (41.2mm)	1/4" (6.3mm)	330
621	2" (51.8mm)	1/4" (6.3mm)	330

Also available with 6mm shafts by special order.

NAIL HOLE REAMERS

Designed for plug repairs on fabric tires only. **Recommended Max 5,000 RPM.**



625

626

Part No.	Head Diameter	Head Length	Coating
625	1/4" (6.3mm)	3" (76.2mm)	230
626	1/4" (6.3mm)	3" (76.2mm)	330
627	3/8" (9.5mm)	3" (76.2mm)	230

Also available with 6mm shafts by special order.

ROUND FACED BUZZOUT WHEELS

These fully-rounded wheels are used primarily for tread area buzzouts on fabric tires. **Recommended Max 5,000 RPM.**



300

306

308

314

Part No.	Diameter	Width	Bore	Coating
300	2" (51.8mm)	1/4" (6.3mm)	3/8" -24	230
302	2" (51.8mm)	1/4" (6.3mm)	3/8" -24	390
304	2" (51.8mm)	3/8" (9.5mm)	3/8" -24	230
306	2" (51.8mm)	3/8" (9.5mm)	3/8" -24	390
308	2" (51.8mm)	1/2" (12.7mm)	3/8" -24	230
310	2" (51.8mm)	1/2" (12.7mm)	3/8" -24	390
312	2" (51.8mm)	3/4" (19mm)	3/8" -24	230
314	2" (51.8mm)	3/4" (19mm)	3/8" -24	390

UNIT WHEELS

For sidewall repair, surface preparation, and finishing. Also popular for conveyor belt fabrication and repair. **Recommended Max 5,000 RPM.**



200



210

Part No.	Diameter	Width	Bore	Coating
200	3" (76.2mm)	1" (25.4mm)	3/8" (9.5mm)	230
202	3" (76.2mm)	1" (25.4mm)	3/8" (9.5mm)	330
204	4" (101.6mm)	1" (25.4mm)	1/2" (12.7mm)	230
206	4" (101.6mm)	1" (25.4mm)	1/2" (12.7mm)	330
208	4" (101.6mm)	1-1/2" (38.1mm)	1/2" (12.7mm)	230
210	4" (101.6mm)	1-1/2" (38.1mm)	1/2" (12.7mm)	330
212	4" (101.6mm)	1-1/2" (38.1mm)	5/8" (15.8mm)	390

EURO UNIT WHEELS

These unit wheels are flat on the closed end; they do not have the recessed end of the standard unit wheel. **Recommended Max 5,000 RPM.**

Part No.	Diameter	Width	Bore	Coating
213	3" (76.2mm)	1-1/2" (38.1mm)	14mm	170
214	3" (76.2mm)	1-1/2" (38.1mm)	14mm	230
215	3" (76.2mm)	1-1/2" (38.1mm)	14mm	330
216	4" (101.6mm)	1-1/2" (38.1mm)	14mm	230
217	4" (101.6mm)	1-1/2" (38.1mm)	14mm	330
218	4" (101.6mm)	1-1/2" (38.1mm)	14mm	390
219	4" (101.6mm)	1-1/2" (38.1mm)	14mm	460
220	4" (101.6mm)	1-1/2" (38.1mm)	14mm	550



213



216

DONUT WHEELS

For use on some Marangoni, Collman, Matteuzzi and other sidewall buffers. Prior to ordering donut wheels verify diameter and bore size.

Recommended Max 5,000 RPM.

Part No.	Diameter	Width	Bore	Coating
706	5" (127mm)	1" (25.4mm)	1-1/2" (38.1mm)	390
707-50	6" (152.4mm)	1" (25.4mm)	50mm	460
708	6" (152.4mm)	1" (25.4mm)	1-1/2" (38.1mm)	390
708-50	6" (152.4mm)	1" (25.4mm)	50mm	390
711	8" (203.2mm)	1 1/4" (31.7mm)	60mm	390



708

DISC SIDEWALL WHEELS

For finishing large section repairs or repair removal and prep in OTR tires. Also used for conveyor belt repair and belt fabrication. For angle head grinders.

Recommended Max 15,000 RPM.

Part No.	Diameter	Bore	Coating
1155	4-1/2" (114.3mm)	7/8" (22.2mm)	390
1156	4-1/2" (114.3mm)	7/8" (22.2mm)	230



1155

DISH WHEELS

For finishing large section repairs or repair removal and prep in OTR tires. Also used for conveyor belt repair and belt fabrication. For angle head grinders, much more rounded shape than the discs.

Recommended Max 15,000 RPM.

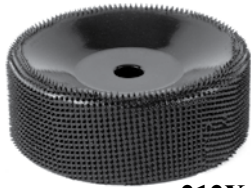
Part No.	Diameter	Bore	Coating
717	4-1/2" (114.3mm)	7/8" (22.2mm)	390
718	4-1/2" (114.3mm)	7/8" (22.2mm)	230



717



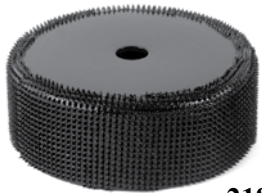
202X



212X



214X



218X

EXTREME UNIT WHEELS

For sidewall repair, surface preparation, and finishing. Also popular for conveyor belt fabrication and repair. **Recommended Max 5,000 RPM.**

Part No.	Diameter	Width	Bore	Coating
202X	3" (76.2mm)	1" (25.4mm)	3/8" (9.5mm)	70
210X	4" (101.6mm)	1-1/2" (38.1mm)	1/2" (12.7mm)	70
212X	4" (101.6mm)	1-1/2" (38.1mm)	5/8" (15.8mm)	90

EXTREME EURO UNIT WHEELS

These unit wheels are flat on the closed end; they do not have the recessed end of the standard unit wheel. **Recommended Max 5,000 RPM.**

Part No.	Diameter	Width	Bore	Coating
214X	3" (76.2mm)	1-1/2" (38.1mm)	14mm	70
215X	3" (76.2mm)	1-1/2" (38.1mm)	14mm	90
217X	4" (101.6mm)	1-1/2" (38.1mm)	14mm	70
218X	4" (101.6mm)	1-1/2" (38.1mm)	14mm	90

EXTREME DISC SIDEWALL WHEELS

For fast exterior clean up on OTR sections and retreads or for conveyor belt fabrication and repair. For angle head grinders.

Recommended Max 15,000 RPM.



1156X

Part No.	Diameter	Bore	Coating
1155X	4-1/2" (114.3mm)	7/8" (22.2mm)	90
1156X	4-1/2" (114.3mm)	7/8" (22.2mm)	70

EXTREME DISH WHEELS

For fast exterior clean up on OTR sections and retreads or for conveyor belt fabrication and repair. For angle head grinders, much more rounded shape than the discs.

Recommended Max 15,000 RPM.



717X

Part No.	Diameter	Bore	Coating
717X	4-1/2" (114.3mm)	7/8" (22.2mm)	90
718X	4-1/2" (114.3mm)	7/8" (22.2mm)	70

EXTREME FLARED CONTOUR WHEELS

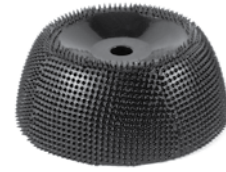
The MCM 90 flared contour wheels are very effective for heavy section repair or rapid removal of old repairs. The MCM 70 wheels are ideal for OTR buffing and inner liner removal. Also great for retread section repair and sidewall clean up.

Recommended Max 5,000 RPM.

Part No.	Diameter	Width	Bore	Coating
109X	2-1/2" (63.1mm)	1-1/16" (26.9mm)	3/8" (9.5mm)	70
111X	2-1/2" (63.1mm)	1-1/16" (26.9mm)	3/8" (9.5mm)	90
114X	3" (76.2mm)	1-1/4" (31.7mm)	3/8" (9.5mm)	70
116X	3" (76.2mm)	1-1/4" (31.7mm)	3/8" (9.5mm)	90
120X	3-1/2" (88.9mm)	1-1/2" (38.1mm)	3/8" (9.5mm)	70
122X	3-1/2" (88.9mm)	1-1/2" (38.1mm)	3/8" (9.5mm)	90
126X	4" (101.6mm)	1-1/2" (38.1mm)	1/2" (12.7mm)	70
128X	4" (101.6mm)	1-1/2" (38.1mm)	1/2" (12.7mm)	90



109X



122X

EXTREME TAPERED CONES

For skiving and texturing of large exterior section repairs.

Recommended Max 5,000 RPM.

Part No.	Diameter	Length	Bore	Coating
505X	7/8" (22.2mm)	2" (51.8mm)	3/8"-24	70
507X	7/8" (22.2mm)	2" (51.8mm)	3/8"-24	90
509X	7/8" (22.2mm)	4" (101.6mm)	3/8"-24	70
511X	7/8" (22.2mm)	4" (101.6mm)	3/8"-24	90



505X



507X



509X



511X

EXTREME ROUND FACED BUZZOUT WHEELS

These fully-rounded buzzouts are primarily used for fabric tires or for heavy rubber grinding if steel cord is avoided.

Recommended Max 5,000 RPM.

Part No.	Diameter	Width	Bore	Coating
300X	2" (51.8mm)	1/4" (6.3mm)	3/8"-24	70
302X	2" (51.8mm)	1/4" (6.3mm)	3/8"-24	90
304X	2" (51.8mm)	3/8" (6.3mm)	3/8"-24	70
306X	2" (51.8mm)	3/8" (6.3mm)	3/8"-24	90
308X	2" (51.8mm)	1/2" (12.7mm)	3/8"-24	70
310X	2" (51.8mm)	1/2" (12.7mm)	3/8"-24	90
312X	2" (51.8mm)	3/4" (12.7mm)	3/8"-24	70
314X	2" (51.8mm)	3/4" (12.7mm)	3/8"-24	90
315X	4" (101.6mm)	3/8" (6.3mm)	1/2"-20	90



300X



308X



306X



314X



100-GEG-134



100-GEG-200

ROTARY KNIFE BLADES

For pre-cured tread cutting machines; contact us for specific application info.

Part No.	Diameter	Bore	Coating
100-GEG-134	6" (152.4mm)	1-3/4" (44.4mm)	FINE
100-GEG-138	6" (152.4mm)	1-3/8" (34.9mm)	FINE
100-GEG-200	6" (152.4mm)	2" (50.8mm)	FINE
300-GEG-200	8-1/4" (209.5mm)	2" (50.8mm)	FINE
325-GEG-250	8-1/4" (209.5mm)	2-1/2" (63.5mm)	FINE
200-GEG	180mm	32mm	FINE

POLYPLUGS FOR FLARED CONTOUR WHEELS

The polyplugs are a very functional accessory upgrade for the contour wheels. They fit inside the hollow profile of the wheel, squaring the wheel better to the shaft or adaptor. This provides a more accurate rotation and a "flywheel" effect. The result is a smoother, more comfortable operation for the technician and maximum usage of the coating. Polyplugs also minimize damage to the wheel from dropping or other rough handling.



Part No.	Diameter	Bore
150	1-3/4" (44.4mm)	3/8" (9.5mm) or N/A
151	2" (50.8mm)	3/8" (9.5mm) or N/A
152	2-1/2" (63.1mm)	3/8" (9.5mm) or N/A
154	3" (76.2mm)	3/8" (9.5mm)
156	3-1/2" (88.9mm)	3/8" (9.5mm) or 1/2" (12.7mm)

SECTION REPAIR ADAPTERS

These 3/8-24 thread x 1/4" shaft adapters make it easy to mount contour wheels, buzzouts, unit wheels, and tapered cones to popular air buffers with 1/4" collets or adjustable chucks.



Part No.	Diameter	Shaft Size	Length
840	3/8"-24	1/4" (6.3mm)	1-1/2" (38.1mm)
842	3/8"-24	1/4" (6.3mm)	2-3/4" (69.8mm)

Please note that in keeping with repair material manufacturer recommendations, you should use only low-speed air buffers in preparing rubber surfaces for repair.

RUBBERHOG®

Rubber Surgery Tools



Rubberhog® repair tools provide the best buffing results in terms of repair quality, safety, ease of use, and tool life. Like many other tools, your Rubberhog must be used correctly to achieve the best results. Please note that because of the extreme sharpness of the Rubberhog coatings, it is important to not buff against wire cords. This can result in broken teeth and shortened tool life.

Rubberhog repair tools are used in air or electric buffers and grinders. Please be sure to use approved safety devices! Always remember to wear proper eye protection when using all power tools.



Oliver
Carbide Products Inc.

7445 Mayer Road | Cottrellville | Michigan 48039 | P: 810.765.1000 | F: 810.765.7000