



KUTZALL®

WWW.KUTZALL.COM



Oliver
2011



Kutzall is the most prominent name in abrasive carbide coated tools for non-metals. From grinding and shaping to cutting and sanding you can expect to “Do It All, With Kutzall”. These tools are fast-cutting and long lasting, designed to work easily and efficiently where conventional tools fail.

Whether it’s your special hobby, do-it-yourself project or industrial application, Kutzall will provide you the effortless control and superior performance you demand. With over 50 years of experience, Kutzall has long been the leader in the industry.

Successful materials and applications include:

- Wood Carving
- Carving Soft Stone
- Ice Carving
- Home Improvement
- Log Homes
- Furniture & Railings
- Fiberglass/Composites
- Plastics
- Rubber & Polyurethane
- Pattern Making
- Cabinet Making
- Woodturning Detailing

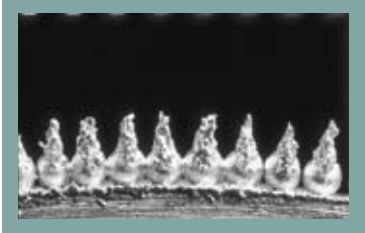


Product Groups

Kutzall tools are divided into three product groups, based on the distinctively different types of coatings used. The Kutzall coatings consist of hundreds of extremely sharp tungsten carbide teeth that remove stock quickly and last 7 to 10 times longer than high-speed steel tools. They are not prone to loading, but may easily be cleaned with solvent or burned clean with a gas torch; the heat won’t harm the teeth.

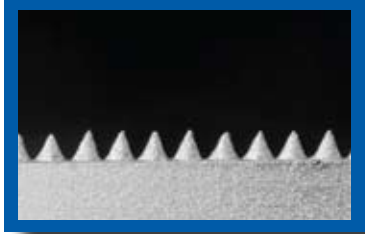
KUTZALL® Original Pages: 1-5

Kutzall Original tools are the most popular and versatile tools in the Kutzall line. They feature sharp, uniform pointed teeth of exceptionally hard metals, brazed onto the steel tool form. These tools remove material very rapidly, yet leave a relatively fine surface on the work. Kutzall Original tools also provide a very smooth cutting action for ease of control.



KUTZALL® Extreme Page: 6

Kutzall Extreme tools use more aggressive, free-cutting teeth arranged in a regular pattern of rows and columns. They are the fastest-cutting Kutzall tools on most materials and are excellent for “heavy hogging” applications. The open patterns of these teeth are very resistant to loading, even on gummy materials.



KUTZALL® Grit Pages: 7-8

Kutzall Grit tools use a very rugged coating comprised of hard, randomly shaped, sharp edge grits. Kutzall Grit coatings are impact-resistant with excellent wear life in the most punishing applications.



All burrs are used for various carving, hobby, industrial, or do-it-yourself applications in flex-shaft tools or popular hand-held grinders with collets or adjustable chucks. Tool diameters are approximate and do not include the thickness of the coating. Burrs are also available in 3mm and 6mm shanks.

3/32" SHAFT BURRS

Recommended speed range: 5,000 - 30,000 RPM.

Part No.	Shape	Head Diameter	Head Length	Coating
BN-18-332	BALL NOSE	1/8" (3.1mm)	3/4" (19mm)	COARSE - SILVER
BN-18-332G	BALL NOSE	1/8" (3.1mm)	3/4" (19mm)	FINE - GOLD
BN-316-332	BALL NOSE	3/16" (4.7mm)	1/2" (12.7mm)	COARSE - SILVER
BN-316-332G	BALL NOSE	3/16" (4.7mm)	1/2" (12.7mm)	FINE - GOLD
C-316-332	CYLINDER	3/16" (4.7mm)	1/2" (12.7mm)	COARSE - SILVER
C-316-332G	CYLINDER	3/16" (4.7mm)	1/2" (12.7mm)	FINE - GOLD
FL-316-332	FLAME	3/16" (4.7mm)	1/2" (12.7mm)	COARSE - SILVER
FL-316-332G	FLAME	3/16" (4.7mm)	1/2" (12.7mm)	FINE - GOLD
RS-38-332	ROTOR SAW	3/8" (9.5mm)	1/8" (3.1mm)	COARSE - SILVER
RS-38-332G	ROTOR SAW	3/8" (9.5mm)	1/8" (3.1mm)	FINE - GOLD
S-14-332	SPHERE	1/4" (6.3mm)	1/4" (6.3mm)	COARSE - SILVER
S-14-332G	SPHERE	1/4" (6.3mm)	1/4" (6.3mm)	FINE - GOLD
T-18-332	TAPER	1/8" (3.1mm)	3/4" (19mm)	COARSE - SILVER
T-18-332G	TAPER	1/8" (3.1mm)	3/4" (19mm)	FINE - GOLD
T-316-332	TAPER	3/16" (4.7mm)	1/2" (12.7mm)	COARSE - SILVER
T-316-332G	TAPER	3/16" (4.7mm)	1/2" (12.7mm)	FINE - GOLD
T-516-332	TAPER	5/16" (7.9mm)	1/2" (12.7mm)	COARSE - SILVER
OL-516-332	OLIVE	5/16" (7.9mm)	1/2" (12.7mm)	COARSE - SILVER

1/8" SHAFT BURRS

Recommended speed range: 5,000 - 25,000 RPM.

Part No.	Shape	Head Diameter	Head Length	Coating
BE-38-E	BIRD'S EYE	3/8" (9.5mm)	1/2" (12.7mm)	COARSE - SILVER
BE-38-EG	BIRD'S EYE	3/8" (9.5mm)	1/2" (12.7mm)	FINE - GOLD
BN-116-E	BALL NOSE	1/16" (1.5mm)	3/8" (9.5mm)	COARSE - SILVER
BN-18-E	BALL NOSE	1/8" (3.1mm)	3/4" (19mm)	COARSE - SILVER
BN-18-EG	BALL NOSE	1/8" (3.1mm)	3/4" (19mm)	FINE - GOLD
BN-14-E	BALL NOSE	1/4" (6.3mm)	1/2" (12.7mm)	COARSE - SILVER
BN-14-EG	BALL NOSE	1/4" (6.3mm)	1/2" (12.7mm)	FINE - GOLD
C-18-E	CYLINDER	1/8" (3.1mm)	1" (25.4mm)	COARSE - SILVER
C-18-EG	CYLINDER	1/8" (3.1mm)	1" (25.4mm)	FINE - GOLD
C-14-E	CYLINDER	1/4" (6.3mm)	1/2" (12.7mm)	COARSE - SILVER
C-14-EG	CYLINDER	1/4" (6.3mm)	1/2" (12.7mm)	FINE - GOLD
CS-716-E	CYLINDER SLEEVE	1/2" (12.7mm)	1/2" (12.7mm)	COARSE - SILVER
CS-716-EG	CYLINDER SLEEVE	1/2" (12.7mm)	1/2" (12.7mm)	FINE - GOLD
DT-38-E	DOVE TAIL	3/8" (9.5mm)	1/2" (12.7mm)	COARSE - SILVER
DT-38-EG	DOVE TAIL	3/8" (9.5mm)	1/2" (12.7mm)	FINE - GOLD



KUTZALL® Original

1/8" SHAFT BURRS CONTINUED



Part No.	Shape	Head Diameter	Head Length	Coating
DTL-38-E	DOVE TAIL LONG	3/8" (9.5mm)	5/8" (15.8mm)	COARSE - SILVER
DTL-38-EG	DOVE TAIL LONG	3/8" (9.5mm)	5/8" (15.8mm)	FINE - GOLD



FL-14-E	FLAME	1/4" (6.3mm)	1/2" (12.7mm)	COARSE - SILVER
FL-14-EG	FLAME	1/4" (6.3mm)	1/2" (12.7mm)	FINE - GOLD



FL-18-E	FLAME	1/8" (3.1mm)	3/16" (4.7mm)	COARSE - SILVER
---------	-------	--------------	---------------	-----------------



RS-12-E	ROTOR SAW	1/2" (12.7mm)	1/8" (3.1mm)	COARSE - SILVER
RS-12-EG	ROTOR SAW	1/2" (12.7mm)	1/8" (3.1mm)	FINE - GOLD



RS-34-E	ROTOR SAW	3/4" (19mm)	1/8" (3.1mm)	COARSE - SILVER
RS-34-EG	ROTOR SAW	3/4" (19mm)	1/8" (3.1mm)	FINE - GOLD



S-18-E	SPHERE	1/8" (3.1mm)	1/8" (3.1mm)	COARSE - SILVER
--------	--------	--------------	--------------	-----------------



S-14-E	SPHERE	1/4" (6.3mm)	1/4" (6.3mm)	COARSE - SILVER
S-14-EG	SPHERE	1/4" (6.3mm)	1/4" (6.3mm)	FINE - GOLD



S-38-E	SPHERE	3/8" (9.5mm)	3/8" (9.5mm)	COARSE - SILVER
S-38-EG	SPHERE	3/8" (9.5mm)	3/8" (9.5mm)	FINE - GOLD



T-116-E	TAPER	1/16" (1.5mm)	3/8" (3.1mm)	COARSE - SILVER
---------	-------	---------------	--------------	-----------------



T-18-E	TAPER	1/8" (3.1mm)	3/4" (19mm)	COARSE - SILVER
T-18-EG	TAPER	1/8" (3.1mm)	3/4" (19mm)	FINE - GOLD



T-14-E	TAPER	1/4" (6.3mm)	1/2" (12.7mm)	COARSE - SILVER
T-14-EG	TAPER	1/4" (6.3mm)	1/2" (12.7mm)	FINE - GOLD

1/8" SHAFT SAFE END BURRS

These burrs are not coated on the top end. This allows for better control & prevents work-piece damage in certain carving applications.

Recommended speed range: 5,000 - 25,000 RPM.



Part No.	Shape	Width	Bore	Coating
C-14-E-SE	CYLINDER	1/4" (6.3mm)	1-3/4" (44.4mm)	COARSE - SILVER



T-14-E-SE	TAPER	1/4" (6.3mm)	1-3/4" (44.4mm)	COARSE - SILVER
-----------	-------	--------------	-----------------	-----------------

1/4" SHAFT BURRS

Recommended speed range: 5,000 - 25,000 RPM.

Part No.	Shape	Head Diameter	Head Length	Coating
BN-14	BALL NOSE	1/4" (6.3mm)	1-3/4" (44.4mm)	COARSE - SILVER
BN-14G	BALL NOSE	1/4" (6.3mm)	1-3/4" (44.4mm)	FINE - GOLD
BN-12	BALL NOSE	1/2" (12.7mm)	3/4" (19mm)	COARSE - SILVER
BN-12G	BALL NOSE	1/2" (12.7mm)	3/4" (19mm)	FINE - GOLD
BN-12X112	BALL NOSE	1/2" (12.7mm)	1-1/2" (38.1mm)	COARSE - SILVER
BN-12X112G	BALL NOSE	1/2" (12.7mm)	1-1/2" (38.1mm)	FINE - GOLD
BN-34	BALL NOSE	3/4" (19mm)	1-1/8" (28.5mm)	COARSE - SILVER
BN-34G	BALL NOSE	3/4" (19mm)	1-1/8" (28.5mm)	FINE - GOLD
C-14	CYLINDER	1/4" (12.7mm)	1-3/4 (44.4mm)	COARSE - SILVER
C-14G	CYLINDER	1/4" (12.7mm)	1-3/4 (44.4mm)	FINE - GOLD
C-12	CYLINDER	1/2" (12.7mm)	3/4" (19mm)	COARSE - SILVER
C-12G	CYLINDER	1/2" (12.7mm)	3/4" (19mm)	FINE - GOLD
C-12X112	CYLINDER	1/2" (12.7mm)	1-1/2" (38.1mm)	COARSE - SILVER
C-12X112G	CYLINDER	1/2" (12.7mm)	1-1/2" (38.1mm)	FINE - GOLD
C-34	CYLINDER	3/4" (19mm)	1" (25.4mm)	COARSE - SILVER
C-34G	CYLINDER	3/4 (19mm)	1" (25.4mm)	FINE - GOLD
FL-12	FLAME	1/2" (12.7mm)	1" (25.4mm)	COARSE - SILVER
FL-12G	FLAME	1/2" (12.7mm)	1" (25.4mm)	FINE - GOLD
FL-14X2	FLAME	1/4" (6.3mm)	1/2" (12.7mm)	COARSE - SILVER
FL-14X2G	FLAME	1/4" (6.3mm)	1/2" (12.7mm)	FINE - GOLD
FL-34	FLAME	3/4" (12.7mm)	1-3/8" (34.9mm)	COARSE - SILVER
FL-34G	FLAME	3/4" (12.7mm)	1-3/8" (34.9mm)	FINE - GOLD
RS-34	ROTOR SAW	3/4" (19mm)	1/8" (3.1mm)	COARSE - SILVER
RS-34G	ROTOR SAW	3/4" (19mm)	1/8" (3.1mm)	FINE - GOLD
RS-114	ROTOR SAW	1-1/4" (31.7mm)	1/8" (3.1mm)	COARSE - SILVER
RS-114G	ROTOR SAW	1-1/4" (31.7mm)	1/8" (3.1mm)	FINE - GOLD
RS-112	ROTOR SAW	1-1/2" (38.1mm)	1/8" (3.1mm)	COARSE - SILVER
RS-112G	ROTOR SAW	1-1/2" (38.1mm)	1/8" (3.1mm)	FINE - GOLD
RS-2	ROTOR SAW	2" (50.8mm)	1/8" (3.1mm)	COARSE - SILVER
RS-2G	ROTOR SAW	2" (50.8mm)	1/8" (3.1mm)	FINE - GOLD
S-12	SPHERE	1/2" (12.7mm)	1/2" (12.7mm)	COARSE - SILVER
S-12G	SPHERE	1/2" (12.7mm)	1/2" (12.7mm)	FINE - GOLD
S-34	SPHERE	3/4" (19mm)	3/4" (19mm)	COARSE - SILVER
S-34G	SPHERE	3/4" (19mm)	3/4" (19mm)	FINE - GOLD
S-1	SPHERE	1" (25.4mm)	1" (25.4mm)	COARSE - SILVER
S-1G	SPHERE	1" (25.4mm)	1" (25.4mm)	FINE - GOLD
T-14	TAPER	1/4" (6.3mm)	1-3/4" (44.4mm)	COARSE - SILVER
T-14G	TAPER	1/4" (6.3mm)	1-3/4" (44.4mm)	FINE - GOLD
T-12	TAPER	1/2" (12.7mm)	1" (25.4mm)	COARSE - SILVER
T-12G	TAPER	1/2" (12.7mm)	1" (25.4mm)	FINE - GOLD
T-34	TAPER	3/4" (19mm)	1-3/8" (34.9mm)	COARSE - SILVER
T-34G	TAPER	3/4" (19mm)	1-3/8" (34.9mm)	FINE - GOLD



KUTZALL® Original

1/4" SHAFT SAFE END BURRS

These burrs are not coated on the top end. This allows for better control & prevents work-piece damage in certain carving applications.
Recommended speed range: 5,000 - 30,000 RPM.



Part No.	Shape	Head Diameter	Head Length	Coating
C-12-SE	CYLINDER	1/2" (12.7mm)	3/4" (19mm)	COARSE - SILVER
C-12X112-SE	CYLINDER	1/2" (12.7mm)	1-1/2" (38.1mm)	COARSE - SILVER
C-34-SE	CYLINDER	3/4" (19mm)	1" (25.4mm)	COARSE - SILVER
T-12-SE	TAPER	1/2" (12.7mm)	1" (25.4mm)	COARSE - SILVER
T-34-SE	TAPER	3/4" (19mm)	1-3/8" (34.9mm)	COARSE - SILVER

SANDING SLEEVES

These rigid sleeves take place of sandpaper sleeves when used on expanding mandrels. They remove material much faster and outlast hundreds of paper sleeves.



Part No.	I.D.	Length	Coating
1300	1/2" (12.7mm)	2" (50.8mm)	COARSE - SILVER
1300G	1/2" (12.7mm)	2" (50.8mm)	FINE - GOLD
1310	3/4" (19mm)	2" (50.8mm)	COARSE - SILVER
1310G	3/4" (19mm)	2" (50.8mm)	FINE - GOLD
1320	1" (25.4mm)	2" (50.8mm)	COARSE - SILVER
1320G	1" (25.4mm)	2" (50.8mm)	FINE - GOLD
1330	1-1/2" (38.1mm)	2" (50.8mm)	COARSE - SILVER
1330G	1-1/2" (38.1mm)	2" (50.8mm)	FINE - GOLD

1/4" SHAFT MANDRELS

Expanding rubber mandrels are to be used with Kutzall sleeves. They fit into tools with 1/4" collets or adjustable chucks. 10,000 max RPM.



Part No.	O.D.	Length	Shaft
1400	1/2" (12.7mm)	2" (50.8mm)	1/4" (6.3mm)
1410	3/4" (19mm)	2" (50.8mm)	1/4" (6.3mm)
1420	1" (25.4mm)	2" (50.8mm)	1/4" (6.3mm)
1430	1-1/2" (38.1mm)	2" (50.8mm)	1/4" (6.3mm)

4 1/2" DISH WHEELS FOR ANGLE GRINDERS

The dish wheels have a pronounced "rounded" shape, much like a donut sliced horizontally. They are excellent for hollowing-out large areas.

Recommended speed range: 5,000 - 15,000 RPM.



Part No.	Diameter	Bore	Coating
DW4120550	4-1/2" (114.3mm)	7/8" (22.2mm)	VERY COARSE - COPPER
DW4120390	4-1/2" (114.3mm)	7/8" (22.2mm)	COARSE - SILVER
DW4120230	4-1/2" (114.3mm)	7/8" (22.2mm)	FINE - GOLD

4 1/2" SANDING DISCS FOR ANGLE GRINDERS

Now with an improved design for even smoother operation! These sanding discs have a nearly flat shape with just a slight curvature for most effective use of the coated area. They are used for major material removal on carvings, logs, re-modeling, and various do-it-yourself projects.

Recommended speed range: 5,000 - 15,000 RPM.



Part No.	Diameter	Bore	Coating
SD412O550	4-1/2" (114.3mm)	7/8" (22.2mm)	VERY COARSE - COPPER
SD412O390	4-1/2" (114.3mm)	7/8" (22.2mm)	COARSE - SILVER
SD412O230	4-1/2" (114.3mm)	7/8" (22.2mm)	FINE - GOLD



FILES

These files have a free-cutting action and are ideal for materials such as masonite, fiberglass, wood, soft stone, plastics, and graphite/epoxy laminates.

They cut in any direction making them great for working in confined areas.

Part No.	Shape	Length	Coating
BFM-6-330	FLAT	6" (152.4mm)	COARSE
BFM-6-230	FLAT	6" (152.4mm)	MEDIUM
BFM-6-170	FLAT	6" (152.4mm)	FINE
BFM-8-330	FLAT	8" (203.2mm)	COARSE
BFM-8-230	FLAT	8" (203.2mm)	MEDIUM
BFM-8-170	FLAT	8" (203.2mm)	FINE
BHR-6-330	HALF ROUND	6" (152.4mm)	COARSE
BHR-6-230	HALF ROUND	6" (152.4mm)	MEDIUM
BHR-6-170	HALF ROUND	6" (152.4mm)	FINE
BHR-8-330	HALF ROUND	8" (203.2mm)	COARSE
BHR-8-230	HALF ROUND	8" (203.2mm)	MEDIUM
BHR-8-170	HALF ROUND	8" (203.2mm)	FINE
BRT-6-330	ROUND	6" (152.4mm)	COARSE
BRT-6-230	ROUND	6" (152.4mm)	MEDIUM
BRT-6-170	ROUND	6" (152.4mm)	FINE
BRT-8-330	ROUND	8" (203.2mm)	COARSE
BHT-8-230	ROUND	8" (203.2mm)	MEDIUM
BHT-8-170	ROUND	8" (203.2mm)	FINE



KUTZALL®
Original

4 1/2" DISH WHEELS FOR ANGLE GRINDERS

The dish wheels have a pronounced "rounded" shape, much like a donut sliced horizontally. They are excellent for hollowing-out large areas.

Recommended speed range: 5,000 - 15,000 RPM.



Part No.	Diameter	Bore	Coating	Color
DW412X120	4-1/2" (114.3mm)	7/8" (22.2mm)	VERY COARSE	BLACK
DW412X90	4-1/2" (114.3mm)	7/8" (22.2mm)	COARSE	BLUE
DW412X70	4-1/2" (114.3mm)	7/8" (22.2mm)	MEDIUM	TEAL



4 1/2" SANDING DISCS FOR ANGLE GRINDERS

These sanding discs have a nearly flat shape, with just a slight curvature for most effective use of the coated area. They are used for major material removal on carvings, logs, deck work, and re-modeling, or various do-it-yourself projects.

Recommended speed range: 5,000 - 15,000 RPM.



Part No.	Diameter	Bore	Coating	Color
SD412X120	4-1/2" (114.3mm)	7/8" (22.2mm)	VERY COARSE	BLACK
SD412X90	4-1/2" (114.3mm)	7/8" (22.2mm)	COARSE	BLUE
SD412X70	4-1/2" (114.3mm)	7/8" (22.2mm)	MEDIUM	TEAL



1/4" SHAFT GRIT BURRS

These burrs are armed with a coating of carbide grit for rough service and hand routing.

They work great for trimming soft ceramics, fiberglass, and other laminates.

Standard coating size is 23 grit. Recommended speed range: 5,000 - 25,000 RPM.

Part No.	Shape	Head Diameter	Head Length	Coating
BNG-12	BALL NOSE	1/2" (12.7mm)	3/4" (19mm)	COARSE
BNG-34	BALL NOSE	3/4" (19mm)	1-1/8" (28.5mm)	COARSE
BNG-14	BALL NOSE	1/4" (6.3mm)	1-3/4" (44.4mm)	COARSE
CG-12	CYLINDER	1/2" (12.7mm)	3/4" (19mm)	COARSE
CG-34	CYLINDER	3/4" (19mm)	1" (25.4mm)	COARSE
CG-14	CYLINDER	1/4" (6.3mm)	1-3/4" (44.4mm)	COARSE
FLG-12	FLAME	1/2" (12.7mm)	1" (25.4mm)	COARSE
FLG-34	FLAME	3/4" (19mm)	1-3/8" (34.9mm)	COARSE
SG-12	SPHERE	1/2" (12.7mm)	1/2" (12.7mm)	COARSE
SG-34	SPHERE	3/4" (19mm)	3/4" (19mm)	COARSE
SG-1	SPHERE	1" (25.4mm)	1" (25.4mm)	COARSE
TG-12	TAPER	1/2" (12.7mm)	1" (25.4mm)	COARSE
TG-34	TAPER	3/4" (19mm)	1-3/8" (34.9mm)	COARSE
TG-14	TAPER	1/4" (6.3mm)	1-3/4" (44.4mm)	COARSE
RSG-34	ROTOR SAW	3/4" (19mm)	1/8" (3.1mm)	COARSE
RSG-114	ROTOR SAW	1-1/4" (31.7mm)	1/8" (3.1mm)	COARSE
RSG-112	ROTOR SAW	1-1/2" (38.1mm)	1/8" (3.1mm)	COARSE
RSG-2	ROTOR SAW	2" (50.8mm)	1/8" (3.1mm)	COARSE



KUTZALL[®]
Grit



4 1/2" GRIT WHEELS FOR ANGLE GRINDERS

Now with an improved design for even smoother operation! The grit sanding discs, dish wheels, and saw blades work great on fiberglass, soft tile, soft stone, composites, and other difficult-to-cut materials. The combo wheel has a unique design which combines the features of a saw blade and a flat sanding disc. It can be used to cut through material as a saw blade, as well as grind using the flat coated surface.

Part No.	Shape	Diameter	Bore	Coating
DW412G36	DISH WHEEL	4-1/2" (114.3mm)	7/8" (22.2mm)	36 GRIT
SD412G36	SANDING DISC	4-1/2" (114.3mm)	7/8" (22.2mm)	36 GRIT
CD412G36	COMBO DISC	4-1/2" (114.2mm)	7/8" (22.2mm)	36 GRIT

GRIT FILES

These files have a free-cutting action and are ideal for materials such as masonite, fiberglass, wood, soft stone, foundry sand cores, plastics, and graphite/epoxy laminates.

They cut in any direction making them great for working in confined areas.

Part No.	Shape	Length	Coating
BFM-6-36	FLAT	6" (152.4mm)	COARSE
BFM-6-60	FLAT	6" (152.4mm)	MEDIUM
BFM-6-100	FLAT	6" (152.4mm)	FINE
BFM-8-36	FLAT	8" (203.2mm)	COARSE
BFM-8-60	FLAT	8" (203.2mm)	MEDIUM
BFM-8-100	FLAT	8" (203.2mm)	FINE
BHR-6-36	HALF ROUND	6" (152.4mm)	COARSE
BHR-6-60	HALF ROUND	6" (152.4mm)	MEDIUM
BHR-6-100	HALF ROUND	6" (152.4mm)	FINE
BHR-8-36	HALF ROUND	8" (203.2mm)	COARSE
BHR-8-60	HALF ROUND	8" (203.2mm)	MEDIUM
BHR-8-100	HALF ROUND	8" (203.2mm)	FINE
BRT-6-36	ROUND	6" (152.4mm)	COARSE
BRT-6-60	ROUND	6" (152.4mm)	MEDIUM
BRT-6-100	ROUND	6" (152.4mm)	FINE
BRT-8-36	ROUND	8" (203.2mm)	COARSE
BRT-8-60	ROUND	8" (203.2mm)	MEDIUM
BRT-8-100	ROUND	8" (203.2mm)	FINE
BW-6-36	WARDING	6" (152.4mm)	COARSE
BW-6-60	WARDING	6" (152.4mm)	MEDIUM
BW-6-100	WARDING	6" (152.4mm)	FINE
BW-8-36	WARDING	8" (203.2mm)	COARSE
BW-8-60	WARDING	8" (203.2mm)	MEDIUM
BW-8-100	WARDING	8" (203.2mm)	FINE

Testimonials from the Pro's



"I proudly use your burrs and find them instrumental in reducing my stone sculptures... and in wood making interesting textures... in my wood and stone sculptures. I rely on them and trust them."

- Jay Goldstein • www.jaygoldsteinart.com

"Kutzall has saved my hands and elbows for more useful things like that opening of the end of the day beverage."

- Bernie Jones • Hudson, Ohio



"Your Extreme Disc should be an essential item in the tool box of anyone building or maintaining log homes. There are many times when a chainsaw is too aggressive and a chisel way too slow. We find the Extreme Disc to be a wonderful tool for precise shaping and fitting of logs, and handy in chainsaw carving as well."

- Bill Huff, The Log Home Center • www.loghomecenter.com

"At Ice Sculptures Ltd, we believe that the only way to produce the best sculptures is to use the best tools. The coated bits we use by Kutzall have helped keep us on the cutting edge, so to speak."

- Randy Finch • www.iceguru.com



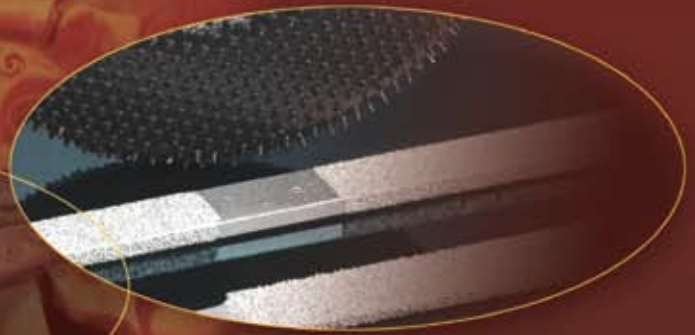
"I couldn't make a living at what I do if it wasn't for Kutzall products... I can cut my work by at least 60%..."

- James Andison • www.sweetwood.ca

"I have been using and recommending Kutzall files, for use on different types of materials for years. Nothing removes soft stone faster (except of course the Kutzall Burrs!). The durability and efficiency of these abrasives is outstanding."

- Marc Fields • www.sculpt.com





Oliver

www.olivercorp.com

7445 Mayer Road | Cottrellville | Michigan 48039 | P: 810.765.1000 | F: 810.765.7000